

Retail Outlot Opportunity Onalaska, WI



- Approximately 2 acres along the I-90/Hwy.16 Interchange.
- Located at the main entrance to a regional power center anchored by Walmart and Home Depot.
- Across Hwy. 16 from Woodman's Food Market.
- One mile northeast of Valley View Mall.
- Available for Sale, Build to Suit or Lease.

Demographics: 2009 Estimates

	1 mile	3 mile	5 mile
Population:	1,153	17,025	44,621

	1 mile	3 mile	5 mile
Median HH Income:	\$83,814	\$58,094	\$50,200

Source: claritas.com

Average Daily Traffic (2006):

I-90:	29,000 VPD
Hwy. 16:	23,300 VPD

For Additional Information Contact:

TOLD Development Company

Brian Adamson 262.797.4104 badamson@toldwi.com

Mike Arneson 262.797.4100 marneson@toldwi.com

Retail Outlot Opportunity Onalaska, WI

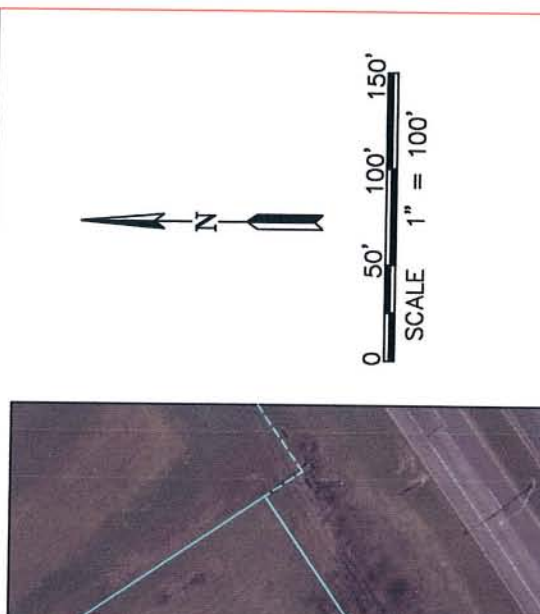
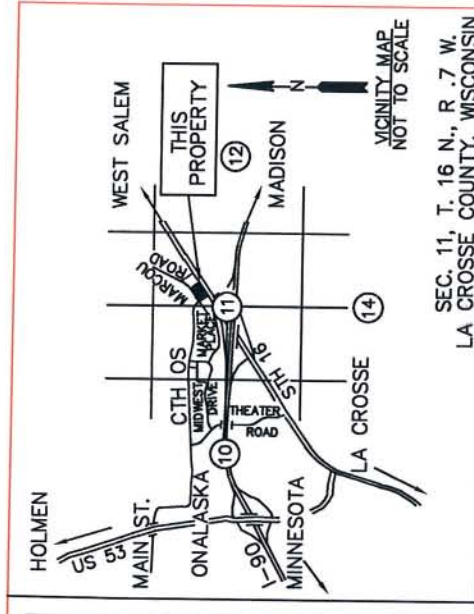


For Additional Information Contact:

TOLD Development Company

Brian Adamson 262.797.4104 badamson@toldwi.com

Mike Arneson 262.797.4100 marneson@toldwi.com



PROJECT: MARCOU ROAD
LOCATED IN PART OF THE SW 1/4 - NE 1/4
SEC. 11, T. 16 N., R. 7 W., CITY OF ONALASKA,
LA CROSSE COUNTY, W

DATE	REVISIONS	BY
6/25/9		

SCALE 1" = 100'

ELMWOOD PARTNERS LIMITED PARTNERSHIP
1859 SAND LAKE ROAD
ONALASKA, WI 54660
PHONE (808) 781-4777 FAX (808) 779-4970

FILENAME: K:\ELMWOOD\CC\COMMERCIAL MARCOU SHEET 1 OF 1